

Spotmaster Spotting Boards And Cabinets – The Most Complete Range of Spotting Systems!

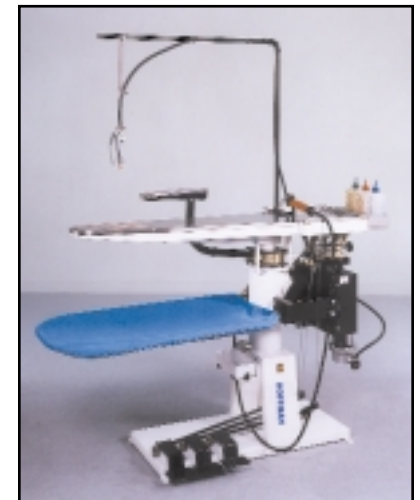
- Hot 'n' Cold-SLB-VC Solenoid controlled steam/air spotting gun, 2 cold spotting guns and solvent containers, self contained vacuum.
- Hot-SLB-V Solenoid controlled steam/air spotting gun and self contained vacuum.
- Hot-SLB Solenoid controlled steam/air spotting gun with central vacuum valve.
- Hot-Spotmaster-C, hot only-mechanical valves, central vacuum connection or self contained vacuum.
- SuperCab II - Ecological filter system and exhaust, pre-spot work station, post-spot work station, self contained vacuum, steam/air gun, cold spotting gun, soap pressure tank with brush and spray gun, water spray gun.



SuperCab II



Hot 'n' Cold SLB-VC



Spotmaster - C

Specifications Spotmaster

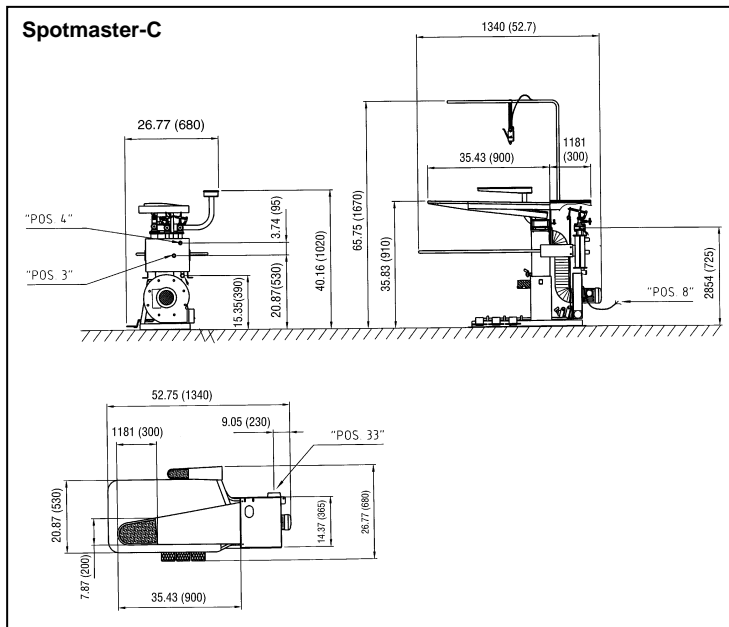
Spotmaster-C

POS	TECHNICAL SPECIFICATIONS	DATOS TECNICOS	CENTRAL SUPPLY
POS3	REQUIRED POWER FOR OPTIONAL VACUUM	ALIMENTACION ELECTRICA	220-60-1- 3 AMPS 220-50-1- 3 AMPS
POS4	STEAM INLET	ALIMENTACION DE VAPOR	1/2" (12.7 mm)
POS32	RETURN STEAM	RETORNO DE CONDENSADOS	1/2" (12.7 mm)
	AIR INLET	ALIMENTACION DE AIRE	1/4" (6.4 mm)
	STEAM WORKING PRESSURE	PRESION DE TRABAJO VAPOR	85 PSI (6 BAR)
	STEAM CONSUMPTION	CONSUMO DE VAPOR	11#/HR (5KG/HR)
	AIR WORKING PRESSURE	PRESION DE TRABAJO AIRE	85 PSI (6 BAR)
	AIR CONSUMPTION	CONSUMO DE AIRE	1FT ³ (.03M ³)
POS 8	VACUUM OUTLET	TURBO SALIDA DE ASPIRADO	4" (102 mm)
	VACUUM MOTOR	MOTOR ASPIRADO	1/2 HP (.375 KW)
	NET WEIGHT	PESO NETO	240# (109 KG)
	GROSS WEIGHT (CRATE)	PESO BRUTO (JAULA)	310# (141 KG)
	OVERALL DIMENSION	DIMENSION DE EMBALAJE	53WX 27DX66H (1346WX686DX1676H mm)
	VOLUME	VOLUME	55FT ³ (1.6M ³)

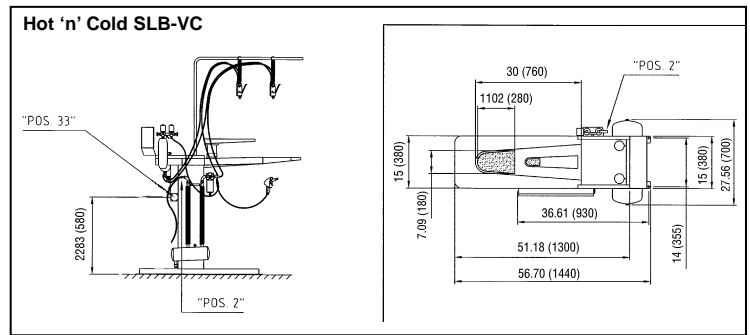
Hot 'n' Cold SLB-VC

POS	CENTRAL SUPPLY
POS 2	110-60-1- 6 AMPS 220-60-1- 3 AMPS 220-50-1- 3 AMPS
	3/8" (9.5 mm)
	1/2" (12.7 mm)
	1/4" (6.4 mm)
	85 PSI (6 BAR)
	10#/HR (5KG/HR)
	85 PSI (6 BAR)
	1FT ³ (.03M ³)
	4" (102 mm)
	1/3 HP (.25 KW)
	130# (60 KG)
	147# (67 KG)
	57WX 28DX56H (1448WX711DX1422H mm)
	52FT ³ (1.5M ³)

Spotmaster-C

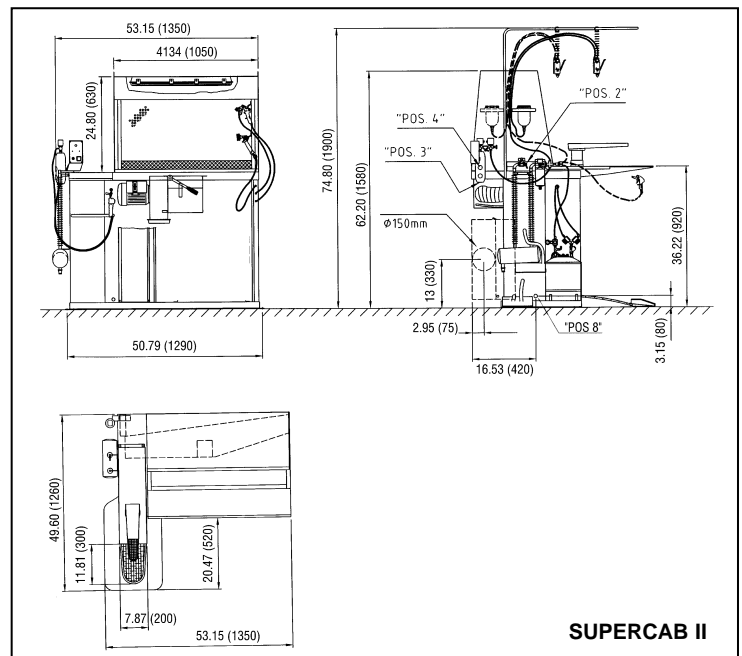


Hot 'n' Cold SLB-VC



Supercab II

POS	TECHNICAL SPECIFICATIONS	DATOS TECNICOS	CENTRAL SUPPLY
POS33	REQUIRED POWER FOR OPTIONAL VACUUM	ALIMENTACION ELECTRICA	220-60-1- 4.2 AMPS 220-50-1- 4.2 AMPS
POS4	STEAM INLET	ALIMENTACION DE VAPOR	3/8" (9.5 MM)
POS32	RETURN STEAM	RETORNO DE CONDENSADOS	1/2" (12.7 MM)
	AIR INLET	ALIMENTACION DE AIRE	1/4" (6.4 MM)
	STEAM WORKING PRESSURE	PRESION DE TRABAJO VAPOR	85 PSI (6 BAR)
	STEAM CONSUMPTION	CONSUMO DE VAPOR	11#/HR (5KG/HR)
	AIR WORKING PRESSURE	PRESION DE TRABAJO AIRE	85 PSI (6 BAR)
	AIR CONSUMPTION	CONSUMO DE AIRE	1FT3 (.03M3)
	VACUUM OUTLET	TURBO SALIDA DE ASPIRADO	4" (102 MM)
	VACUUM MOTOR	MOTOR ASPIRADO	0.8HP (.6 KW)
	NET WEIGHT	PESO NETO	660# (300 KG)
	GROSS WEIGHT (CRATE)	PESO BRUTO (JAULA)	748# (340 KG)
	OVERALL DIMENSION	DIMENSION DE EMBALAJE	53WX 50DX75H (1270WX1346DX1905H MM)
	VOLUME	VOLUME	115 FT3 (3.25M3)



Equipment is subject to manufacturer's standard warranty. Accuracy of illustration and description of equipment shown herein applies to product as manufactured at time of publication.

Copyright 2002. Hoffman/New Yorker, Inc. All rights reserved.
Printed in U.S.A. 1M 902

HOFFMAN/NEW YORKER, INC.

46 Clinton Place Hackensack, NJ 07601 USA

Phone: 201-488-1800 Fax: 201-488-4480

www.hoffman-newyorker.com